

Functionalities



JSitemap PRO is a powerful component to manage sitemap contents. It embeds an innovative and revolutionary system to **add dynamically whatever type of content you need to your sitemap** without using plugins!

In this way once installed component you will be able to manage virtually whatever content you want to add that is available on Joomla! database and is related to a particular installed extension. This is made possible through sitemap **'Data Sources'**, that represent the sources of data that will be displayed in sitemap tree. Data sources rely on the powerful **SQL Query Compiler** that allows easily and through a user friendly interface to extrapolate data from Joomla database formatting them accordingly to sitemap links that need to be generated.

JSitemap PRO main functionalities include:

- **Automated wizard** to create data sources with one click for common extensions
- Dynamic sitemap data sources without the need of plugins
- **SEO control panel** to manage common tasks easily
- Automatic **ping search engines** to force reload of sitemap after it has changed
- Automatic **management for robots.txt** to add sitemap entries
- **Integrated editor** for robots.txt
- **Caching system** to speed up all types of sitemaps generation
- **Formatted sitemap view for XML** let you view XML sitemaps in a user friendly format
- **Charts and stats for links** let you monitor how many links your sitemap has and can grow
- **Pingomatic web service integration** to ping links directly to the sources of search engines
- **HTML sitemap** with advanced Javascript tree foldering and beautiful CSS styling
- **XML sitemap generation and exporting** for search engines like Google, with advanced optimization
- **Multiple types** of sitemap: HTML, XML, Images, GNews and Mobile for every installed languages
- Full **multilanguage** support
- **Export and splitting** for large sitemaps
- Advanced management of sitemap **ordering** and items **relevance**
- **Auto creation** of standard sitemap data sources for Joomla! **menus and contents**
- Easy configuration and installation steps, to fine tune behavior and aspect
- **Multicolumn responsive sitemap** in just one click
- **Sitemap priorities** on every single menu item

Once installed component you will be able to reach JSitemap PRO control panel and manage auto-created data sources to publish them, so that they will be immediatly visible in your sitemap.

Basic guidelines for sitemaps management

You **should know basic informations** about sitemaps management in order to avoid mistakes and get best results. Below is given a summary for offical supported systems to **submit and manage sitemaps** according to Google guidelines, and how to accomplish all this tasks with JSitemap PRO that **supports every available system**.

- **Submit sitemap using Google Webmasters Tools** - You can register a Google account and your domain to access Webmaster Tools console where you will be able to submit sitemap links that JSitemap PRO provides in SEO control panel for **realtime dynamic generation of your sitemap**.
- **Submit sitemap using robots.txt** - If you don't use Google Webmasters Tools or if you want that also other search engines will be able to find easily your sitemap, you should **place an entry inside your robots.txt file** to specify through a directive the path to your sitemaps. This is **completely managed by JSitemap PRO**, it's enough click on buttons available in SEO control panel to add an entry for different sitemaps to your robots.txt and let **Google and other search engines find your sitemap**.
- **Submit or Resubmit sitmap using HTTP method** - If you want to submit your sitemap to Google or Bing without extra work and Webmasters Tools account, or to resubmit your sitemap directly after it has changed, you simply need to click on button provided in JSitemap PRO SEO control panel to **submit immediatly sitemaps** to Google or Bing search engines. Doing this you **don't need to submit or resubmit using Webmaster Tools** and you can **speed up process and indexing in one click** for every sitemap generated on your site.
As a best practice it's recommended having also a Webmasters Tools account to track status of indexing for submitted sitemap.
- **Resubmit sitemap using Webmaster Tools** - Also if search engines at **predefined intervals refresh your site and sitemap indexing**, to **speed up this process** you can choose to resubmit sitemap when changes occur. To do this you can enter in your Webmasters Tools console and click the 'Resubmit' sitemap button. In this way the search engine will be immediatly informed to rescan your sitemap.

Control Panel

JSitemap PRO control panel is a features rich one, in that you can manage the whole component tasks and access to the SEO panel functionalities.

Administration

Site Users Menus Content Components Extensions Help

0 Visitors 2 Admins 0 View Site Log out

JSitemap PRO - Control Panel

MAIN JSITEMAP FUNCTIONALITIES

Sitemap Data Sources Wizard Data Sources Show HTML Sitemap

Show raw XML Sitemaps Show formatted XML/XSL Sitemaps Export XML Sitemap

Robots.txt Editor Ping-O-Matic Links Configuration

Help & Documentation

Up-to-date. Latest release: 2.0.2

SEO CONTROL PANEL AND ADVANCED TASKS

JSitemap PRO SEO panel

Link for HTML sitemap http://joomla25/index.php?option=com_jmap&view=sitemap&lang=en

Link for XML sitemap http://joomla25/index.php?option=com_jmap&view=sitemap&format=xml&lang=en

Link for XML Images sitemap http://joomla25/index.php?option=com_jmap&view=sitemap&format=images&lang=en

Link for XML Google News sitemap http://joomla25/index.php?option=com_jmap&view=sitemap&format=gnews&lang=en

Link for XML Mobile sitemap http://joomla25/index.php?option=com_jmap&view=sitemap&format=mobile&lang=en

Sitemap language English (UK)

Apply menu filters - No menu filter -

Number of published data sources: 3 Number of total available data sources: 42 Number of total menu data sources: 8 Number of user defined data sources: 33

SUBMIT SITEMAPS AND MANGE ROBOTS.TXT

MULTILANGUAGE SELECT LIST FOR AVAILABLE LANGUAGES

ADD FILTER TO LINKS FOR MULTIPLE SITEMAPS FROM MENU ITEMS

CHECKER FOR UPDATES AVAILABLE TO DOWNLOAD

- **Sitemap Data Sources** - Let you manage list of sitemap data sources currently available
- **Wizard Data Sources** - Let you create data sources through wizard for common extensions or start a user defined one
- **Show HTML Sitemap** - Open a new browser window to see the HTML sitemap, as a normal frontend visitor on your site
- **Show XML Sitemap** - Open a new browser window to see the sitemap in XML format, as a spider bot for example GoogleBot during indexing
- **Show formatted XML/XSL Sitemaps** - Open a new browser window to see the sitemap in XML format using a user friendly layout complete of stats and graphic charts, through XSL stylesheets
- **Export XML Sitemap** - You can easily export the entire sitemap in XML or ZIP format, for example to place it as a static sitemap file on your server directory or manage splitted sitemap files contained in zip archive
- **Robots.txt Editor** - Let you open the inline editor for robots.txt on your server
- **Ping-o-matic links** - Let you access database manager for pinged links to Ping-o-matic services
- **Configuration** - Let you adjust JSitemap PRO settings
- **Help and Documentation** - Read documentation for JSitemap PRO

In the SEO control panel you can manage task for search engine optimization activities and sitemap links.

- You can directly copy links for sitemap in XML and HTML format. **The XML sitemap links are ready to be submitted for example to Google WebMasterTools**, because through these links JSitemap PRO generates different XML sitemaps dynamically, so that they **will be always updated automatically every time you insert new contents** of whatever type and data source they belong.
- Buttons to **submit/resubmit sitemaps to search engines** and **manage robots.txt** file in your Joomla! installation make this extension also more powerful. You don't need anymore to login to your Google or Bing Webmaster tools account to submit new sitemap or resubmit sitemap every time you know that there are relevant changes that require a reload by search engines. By clicking this button **search engines (Google and Bing supported) will be automatically notified for new sitemap to be added to their main index or that your sitemap has been changed and they need to re-scan it now!** This allow more speed in indexing sitemap, because you can easily notify changes to search engines, without worry about waiting that your sitemap will be re-indexed at predefined intervals that depend on search engines algorithm. Moreover especially if you **don't have an account for Google or Bing Webmasters tools**, you can use **alternative method** to let search engines find your sitemaps, simply **adding entry for sitemaps link to your robots.txt file**. This is completely managed by JSitemap PRO, and you need to click only once the button to add entry for related sitemap link and it **will be added to your robots.txt...** all done! Of course you can add multiple links if you have multiple sitemaps, for example changing language the links will be updated and you can add updated links based on language to robots.txt. If robots.txt already contains an entry for clicked sitemap link, it won't be added twice, and you will be notified with an error message about link already added.
- **Select list for languages** is available for multilanguage sites, so that you can easily select and change the site language you want your sitemap will be visible and generated for. In this way you may have **multiple sitemaps by type but also by language**, so for example you can generate 3 links/sitemaps for XML, Images and GNews related to English, other 3 links for French, other 3 for Spanish and so on. In this way your site will have a total of 9 sitemaps to submit to search engines, 3 links for each language. Of course you may not be interested to submit Images sitemap or Google News sitemap and so rely on a single XML link for standard main sitemap.
- **Select list for menu filters** let you apply to sitemaps links the data source filters you have chosen for **multiple sitemaps attached to different menu items**. Given you have assigned to menu sitemap1 the data sources x-y-z and to menu sitemap2 the data sources a-b-c, you can easily choose the menu item from dropdown to have same filtering not only for HTML sitemap format associated to menu, but also for all the other XML types of sitemap. This will let you have links for XML sitemaps that produce different results as for HTML, this can be useful especially when you have multiple sitemaps associated to

different multilanguage menu that get items from different data sources.

- You can see also labels containing information about data sources for the sitemap: published, total, menu and user defined data sources
- Finally you can click on about tab to show information about current extension such as version, author, support links

Multilanguage support

JSitemap PRO is **integrated with native Joomla 1.6/1.7/2.5 multilanguage system or with 3PD multilanguage extensions like JoomFish**, in order to generate **multiple different sitemaps** for users and search engines, **based on chosen language**.

In this way if you are using a multilanguage site with contents, menu, etc divided according to language, you can offer to users the right HTML sitemap in frontend showing items translations for the user chosen language.

Moreover you can generate and submit to search engines like Google, **multiple sitemaps one for each language** containing the right items links to be **indexed for specific language**.

To change sitemap language you should simply **pick the desired language from the select list** available in SEO control panel and the links for sitemap generation will be **automatically updated** with param '&lang=xx', so for example generic sitemap link:

'http://mydomain/index.php?option=com_jmap&view=source&format=xml'

can become this link for spanish language:

'http://mydomain/index.php?option=com_jmap&view=source&format=xml&lang=es'.

This will generate the XML sitemap for Spanish language, and changing the language short tag you can switch to other languages.

Moreover if you click on the control panel buttons for 'Show XML Sitemap' and 'Export XML sitemap', the **generated sitemap will reflect** your currently chosen language. In this way switching between available languages you can easily display or export XML sitemaps for all languages.

HEADS UP: the **multilanguage select list will be available by default** when your Joomla! system has an active multilanguage manager, so for example system language plugins for native multilanguage or 3PD such as Joomfish have to be correctly published. If you are using a **different language system** and you can't see the dropdown for multilanguage, you can enable it using the parameter in JSitemap configuration: 'Sitemap multilanguage dropdown' and choose 'Show always dropdown'.

Sitemap types and management

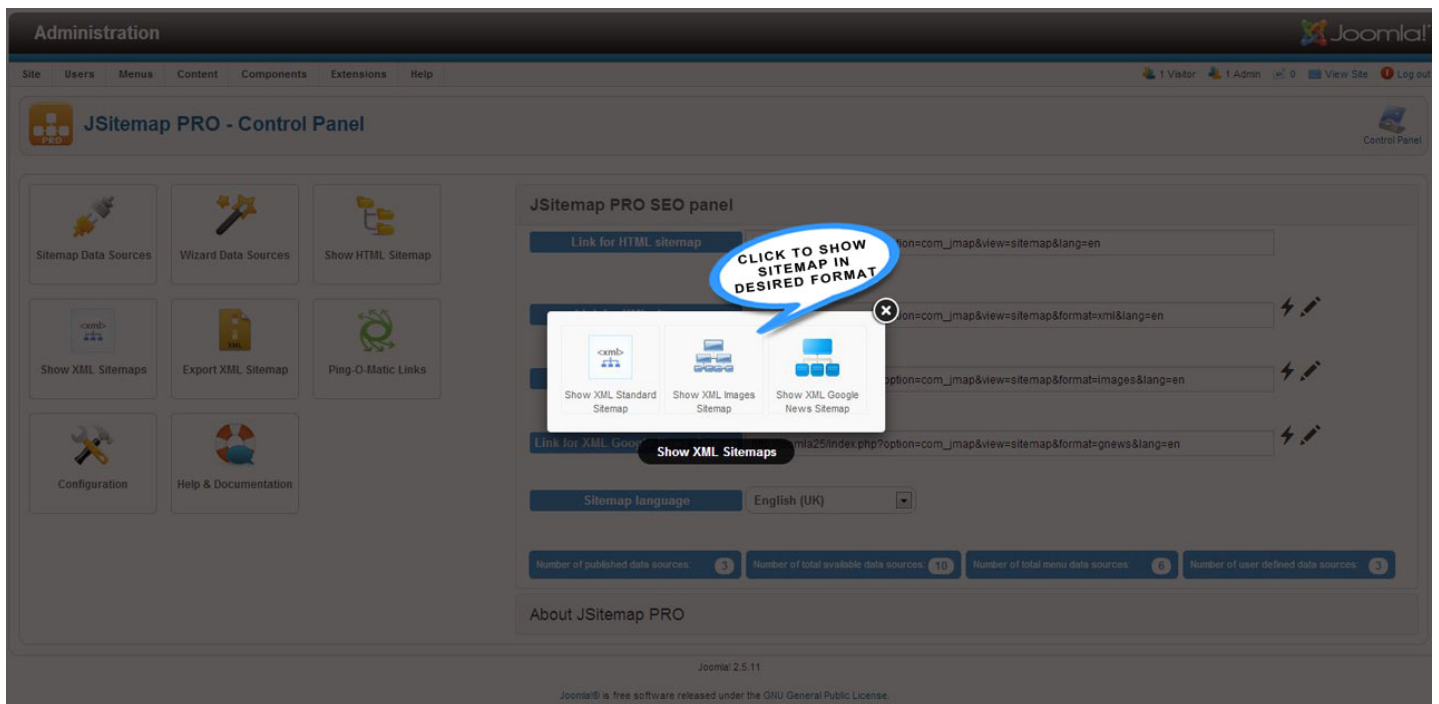
JSitemap PRO supports **generation of different types of sitemap**. Beyond the normal **XML sitemap** used to indexing your regular web contents by search engines, you can generate specific types of sitemap for Google, enhancing at a higher level indexing of your site and contents. JSitemap PRO supports generation of **'Images sitemap' and 'Google News sitemap'**, that you can submit directly in XML format using link provided for dynamic generation.

Images sitemap

With image search, just as with web search, Google's goal is to provide the best and most relevant search results to users. By not listing images in your Sitemap, you're telling Google that they have no importance.

JSitemap PRO can **generate sitemap for images present on your site's pages**, to let your site being found through images search and let you **exclude images** that are not relevant for indexing through a **fine tune system based on filters**.

To show/export XML images sitemap you need to click on 'Show XML Sitemaps' icon in main control panel and in the opening lightbox window choose button 'Show XML Images Sitemap' or 'Export XML Images Sitemap'.



Of course you may not desire to include all images that are present on one page, simply because some of them could be not relevant for indexing, for example icons provided by Joomla! for pdf format or printing.

To solve this problem JSitemap PRO offers an **advanced filtering system to include or exclude images for each single data source**, based on **slices of string or paths** that you can specify comma separated.

In the example below for a virtuemart products data source has been specified that only images with path including 'virtuemart' will be valid for Images Sitemap. Moreover by default it will be ignored and excluded those images that are named with 'pdf', 'print', 'email', etc that are standard for Joomla! and for this reason are not relevant for sitemap and indexing. You can specify whatever rules you need, both for include and exclude filters, simply separate them by comma. Finally you can choose to **exclude at all** images for a specific data source, For example if you don't want to include images of virtuemart products you can switch off parameter for 'Include elements in XML Images sitemap'.

Parameters for XML Sitemap

Include elements in XML sitemap	No Yes
Elements priority	0.5
Elements change frequency	daily
Include elements in XML Images sitemap	No Yes
Include filters for sitemap images	virtuemart
Exclude filters for sitemap images	pdf,print,email,media,templates
Title description for images sitemap	Use Global Auto mode title/alt Always use title Always use alt

INCLUDE FILTERS FOR XML IMAGES SITEMAP

HEADS UP! Images sitemap generation scans your site's pages looking for images contained inside, and once discovered put them into XML format that will be accepted by Google. This **could require a lot of time to complete** because the spider shipped with JSitemap has to crawl all the links in your sitemap. For this reason you should optimize images sitemap leaving only important links to be scanned and eventually **limiting the max number of HTTP requests for available sitemap links** to be placed **through the provided parameter** (See image below). Images sitemap generation could be very resource expensive if you have sitemap with thousands of links, and it could require also **settings adjust on your hosting server**, for example if HTTP Sockets are not enabled or HTTP connection to same server are not allowed for security reason. You can also enable caching to speed up images sitemap generation, also if first request will need time to generate full sitemap to be cached.



JSitemap PRO - Configuration

General preferences Sitemap Aspect Advanced settings Permissions

Show main title

No Yes

Enter main title

Header level for main title

h1

h2

h3

h4

h5

Class for sitemap div container

sitemap

Show content pagebreaks links

No Yes

Include jQuery library

No Yes

Open link mode

Self window

Blank window

Parent window

Include menu external links

No Yes

Split sitemap

No Yes

Max links per file

5000

Images sitemap requests limit

200 ~80 sec

SET MAX NUMBER OF REQUESTS TO BE MADE TO GENERATE IMAGES SITEMAP

Google News sitemap

If you want to be indexed within Google News, your site must have a particular XML sitemap published specifically for Google News system.

A big mistake, or rather a missed opportunity, is not creating a Google News sitemap. Your articles will still get indexed via regular site crawling, but the news sitemap helps to expedite the process. It also enables you to segment your news content (i.e. articles and blog posts) from other forms of editorial content that are not eligible for indexation. With breaking news and trending topics speed counts; don't put yourself at a competitive disadvantage. Along those lines also make sure that your Google News sitemap is updated immediately whenever new, eligible content is published. The other plus of a Google News sitemap is it gives you the ability to provide additional information such as image-related tags, keywords and genre tags.

JSitemap PRO does all this work for you and let you create Google News Sitemap **based on native Joomla! contents**. This means that for XML generation only content data source will be used for Google News sitemap, because it contains the only relevant information accepted by Google for news SERP. So **it won't be processed menu links and custom user data sources**. For articles included within Google News sitemap will be extracted automatically additional informations needed for XML format like: language, genre, access type, etc.

HEADS UP! In order to let Google accept correctly your Google News sitmap you should have a **registered publication name on your Google account**, and it must match that on your site that will be used for sitemap. For example news from CNN will be shown in Google News search results with registered publication name as 'CNN'(See image below for green text). Moreover Google recommends to include inside Google news sitemap articles published in the last two days. For this you can find a parameter in JSitemap configuration under tab 'Advanced settings' that let you enable limit to recent 'n days' articles used for Google news, by default 2 days. A good strategy if you have just started to submit Google news sitemap on existing site with already a lot of contents, would be initially leave off this parameter to ensure indexing of older contents, and after that indexing is complete enable limit to submit sitemap only with most recent articles to be crawled every day.



CNN Poll: Majority says raise debt ceiling

(CNN) -- Surveys indicate that most Americans didn't think shutting down the government in an attempt to dismantle the new health care law ...

By default JSitemap PRO to generate Google News sitemap will use your **Joomla! site name** as specified in **Joomla! global configuration**. So for example if you had used 'CNN' to register your Google publication name, your site should be named 'CNN' in order to let JSitemap generate correctly Google News sitemap. However you can **override this setting**, in that JSitemap let you specify a different publication name from your site name through the parameter shown in image below. Visit this link to have more information about Google policy for News inclusion and registration. <https://support.google.com/webmasters/answer/74288?hl=en>



JSitemap PRO - Configuration

General preferences Sitemap Aspect Advanced settings Permissions

Publication name for Google news sitemap

Include archived contents within sitemap

No Yes

Title description for images sitemap

Auto mode title/alt

Always use title

Always use alt

ACL filtering

Enabled Disabled

SPECIFY PUBLICATION NAME FOR YOUR GOOGLE NEWS SITEMAP

Mobile sitemap

In case if your site has a specially formatted version designed for mobile devices, it may be best practice create a separate mobile sitemap and submit it to search engines. That will allow search engines to better serve search requests from mobile devices and lead them to your website pages. Mobile sitemap should only contain links to pages with mobile web content, otherwise you should use regular XML sitemap. You should use Mobile XML sitemap ONLY if you have a mobile version of your site, developed specifically for mobile phones that need mobile contents. It may be useful if you have **www.yoursite.com** and a mobile phones version **m.yoursite.com** of your site with valid mobile markup. If you don't have a mobile phones version of your site simply **don't use this type of sitemap**, search engines **will ignore mobile URLs pointing to pages with contents not valid for mobile phones**. A Mobile Sitemap can contain only URLs that serve mobile web content. Any URLs that serve only non-mobile web content will be ignored by the Google crawling mechanisms. If you have non-mobile contents, create a standard XML Sitemap for those URLs. Moreover most **modern devices like Android and iOS smartphones or tablets, don't need a mobile sitemap**. They are considered as desktop PC by search engines. To target mobile phones you should have a mobile version of your site following special mobile markup:

- XHTML mobile profile (WAP 2.0)
- WML (WAP 1.2)
- cHTML (iMode)

If you have this, it will make sense using also a mobile sitemap format for those URLs.

Sitemap splitting

With JSitemap PRO you will be able also to **split large sitemaps** into sub-chunks of fixed records, to manage them and let search engines accept all your contents with no limitation. So for example if submitting your sitemap to Google or Bing you experiment an error due to the excess of the limit for size or number of links, you can choose to enable split functionality in component configuration, and establish how many links should be included in every chunk.

When you choose to split sitemap you **need to export an 'zip' archive** in order to get all sitemap chunks, you can do this simply going to export sitemap section, and instead of a unique XML file an archive will be generated.

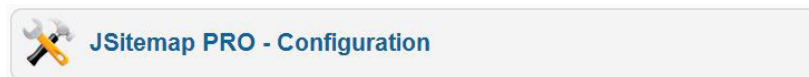
Inside the package you will **find all multiple XML files** numbered accordingly to numeric chunks and containing a sub-part of the total records.

Splitting sitemap can't be generated dinamically (through links provided in SEO control panel that will generate always full sitemap), so you have to export the zip archive containing the multiple chunks splitted on different XML files, and once unzipped **position them uploading via FTP to your server root**.

It's important to note that **inside zip archive will be included a special file named starting with 'sitemapindex...xml'**. This is the **main sitemap index file** that include links to all subchunks (according to Google protocol) for splitted sitemap files. Once uploaded all files to your server root you **should only submit to Google Webmaster tools the link to this main index file**.

Otherwise if you don't have a Webmaster tools account you can **add an entry in your robots.txt** as follow:

Sitemap: http://mydomain/sitemapindex_xml.xml



General preferencesSitemap AspectAdvanced settingsPermissions

Show main title

NoYes

Enter main title

Header level for main title

h1h2h3h4h5

Class for sitemap div container

sitemap

Show content pagebreaks links

NoYes

Include jQuery library

NoYes

Open link mode

Self windowBlank windowParent window

Include menu external links

NoYes

Split sitemap

NoYes

Max links per file

50000

Images sitemap requests limit

200 ~80 sec

Caching system

You can enable cache to **speed up subsequent sitemap generation**. Cache is available for **all types of sitemap**, and once enabled the very first time a certain sitemap is generated all the **contents will be cached and available in less time for all subsequent requests**.

Choosing expiration time in Joomla! global configuration you can choose **how long the cached sitemap will be considered as valid**. When Joomla! cache time expires cached sitemaps are considered stale, and a **new generation/cache process will be started**.

To enable caching system you need to enable the option available inside **JSitemap configuration panel**. Ensure to get the green icon that indicates you have enabled Joomla!

cache in global configuration.

Administration

Joomla!

0 Visitors1 Admin0View SiteLog out

JSitemap PRO - Configuration

Save configurationControl Panel

General preferencesSitemap AspectAdvanced settingsPermissions

Publication name for Google news sitemap

Limit to recent Google News articlesNoYes

Number of days for Google news limit2

Include archived contents within sitemapNoYes

Title description for images sitemapAuto mode title/altAlways use titleAlways use alt

ACL filteringEnabledDisabled

Sitemap multilanguage dropdownAuto detect multilanguage

Use cache for sitemapsEnabledDisabledJoomla! cache is enabled

ENABLE CACHING FOR SITEMAPS, JOOMLA! CACHE IS ALREADY ACTIVE

Data Sources

Data sources concept is the basis of JSitemap PRO. With this innovative and powerful functionality you can **insert every type of content** in your sitemap without the need to use third party plugins for every extension you want to grab data from to be showed inside sitemap. To reach data sources management you simply click on the first icon in JSitemap PRO control panel, and it will be showed the list of currently available data sources for sitemap. Basically data sources can be of **three different types**:

- **Content**: this is an **auto generated data source**, and it represents inside sitemap all your Joomla! contents splitted by categories. You will see always 1 data source for this type and you can only edit settings for this type of data source as it's predefined and auto-managed by component.
- **Menu**: this is an **auto generated data source**, and every instance of it represents a menu that you created in your Joomla! CMS. JSitemap PRO synchronize automatically these data sources to your menus, so you will have many data source of type 'menu' as your Joomla! menus. Every time you create a new menu, a new data source of type 'menu' will be available in JSitemap PRO list. so that you can decide to publish it and show its links inside sitemap, easy enough?
- **User**: this type of data sources is the most interesting one, because it will let you get data from virtually **every type of extension** installed that use Joomla! database. You can create user defined data sources in two way, using the fully automated process based on **one click Wizard**, or choose to **start from scratch a new one** for example if your extensions is still not available inside wizard. You can contact our support asking for assist or requiring that extension you are using will be available in wizard process.

Administration

Joomla!

1 Visitor1 Admin0View SiteLog out

JSitemap PRO - Sitemap Data Sources

New data sourceEdit data sourceDuplicateDeleteControl Panel

Filter:GoReset

USER, MENU AND CONTENT DATA SOURCES FOR CURRENT SITEMAP

GO TO WIZARD TO CREATE A NEW DATA SOURCE

Select State

Num	Name	Type	Description	Order	Published	ID
1	Sobipro categories	user		5	✓	167
2	Joomla contacts	user		6	✓	166
3	Sobipro entries	user		4	✓	169
4	Virtuemart products	user		1	✓	170
5	JomSocial toolbar	menu	Toolbar items for JomSocial toolbar	9	✗	3
6	topmenu2	menu	topmenu	7	✗	4
7	bottommenu	menu	bottommenu	10	✗	5
8	test mod	menu		11	✗	6
9	Main menu	menu	Menu Principale	3	✗	171
10	GermanMenu	menu		2	✗	172
11	Content"geg	content	Default contents source	8	✗	1

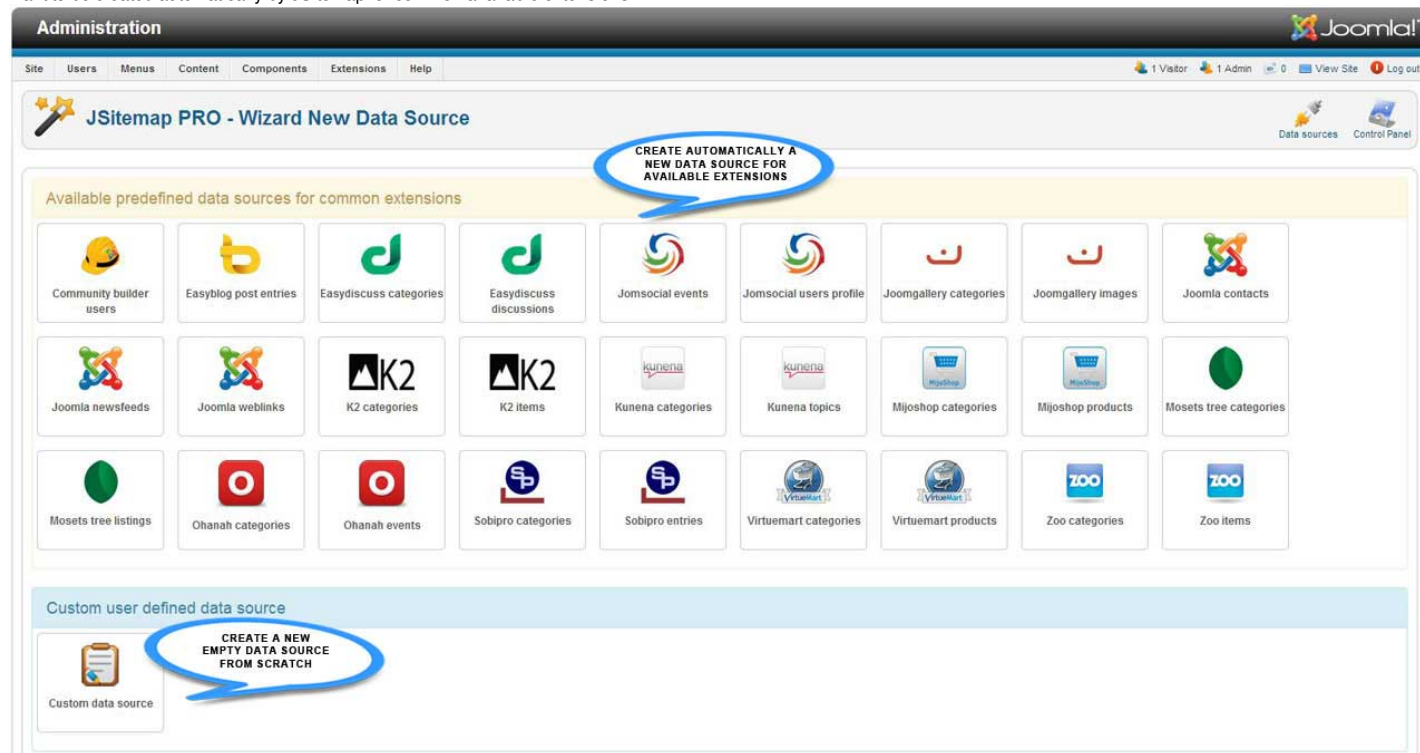
Display # 20

As you can see from picture there are 1 data source for 'content', several data sources for 'menu', and several data sources of type 'user'. This will mean that inside sitemap will be visible the contents tree splitted into categories, the menu items for system menus, and items taken from third party components that are user defined types. In this way you can send to search engines a sitemap containing also the links managed by Sobipro, Virtuemart, etc components, all without


using specific sitemap plugins!

There are no limits to what you can insert in your sitemap, every installed component that uses Joomla! database can be queried for links generation to be placed inside sitemap. This means that you can optimize search engines indexing with all your Joomla! entities on your own, using a single component without looking for specific plugins.

Once installed JSitemap PRO you will get by default menu and content type data sources already created, and your sitemap will be immediatly built on that data. If you need to add some other extensions as a source for sitemap, the first step is **click on button 'New data source'**. This will **show up the Wizard control panel** where you can choose type of data source you want to be created automatically by JSitemap for common available extensions.



If you choose an **available data source for common extensions**, after clicking on icon button you will be shown a message and shortly once finished creation process you will be redirected to data sources list and informed about results of this operation. At this point the links requested will be **already available in your sitemap**. However you could need to **fine tune some parameter for the data source**, so you should enter in **edit mode** to display control panel for single data source, see picture below.


Edit Data Source

Details

Name:

Type:

Description:

Published: ☐ No ☒ Yes

Parameters


Open link mode:

ACL filtering:

Title for data source:

Show title for data source: ☐ No ☒ Yes

Enable debug mode: ☐ No ☒ Yes



Parameters for XML Sitemap

Include elements in XML sitemap: ☐ No ☒ Yes

Elements priority:


Elements change frequency:

Include elements in XML Images sitemap: ☐ No ☒ Yes

Include filters for sitemap images:

Exclude filters for sitemap images:

Title description for images sitemap:



Parameters for generated links query string

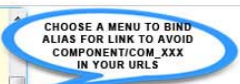
Specify component VIEW if needed for link:

Enter additional params for query string:

Menu item for alias SEF links:

- Invite Friends
- Request Sent
- Pending my approval
- Groups
- Photos
- Videos
- Events
Main menu
- Virtuemart shop
- J Sitemap
- Home
- Article #1

☒ Virtuemart shop
☐ J Sitemap
☐ Home
☐ Article #1



Most frequently you need to **assign a menu item** once created a new user defined data source. This is done to **avoid to have unrewritten SEF chunks** in your links, for example **'component/com_virtuemart'**. In this example selecting the menu item 'Virtuemart shop' we specify that links for sitemap should have to **replace 'component/com_virtuemart' with that menu alias**, for example **'shop'**. So instead of having links

'http://yourdomain.com/en/component/com_virtuemart/smaller-shovel-detail.html'

you will be able to get links more SEF friendly

'http://yourdomain.com/en/shop/smaller-shovel-detail.html'

Note that if on your site you will have installed a 3PD advanced extension to manage URL rewriting such as sh404SeF you don't need this setting.

HEADS UP! For **menu data source** you will get a multiselect that you can use to **exclude menu items** from your sitemap.

For **content data source** instead a multiselect will be available to **exclude some categories of contents** from your sitemap.

SQL Query Compiler

If you choose to create a new data source from scratch the wizard will be bypassed, and you will get redirect directly to edit screen for data source with empty settings.

In order to create a new data source from scratch for specific extensions not available in predefined list, you should know SQL basis and understand how this can be accomplished.

The hidden secret of such a powerful and flexible extension like JSitemap PRO is grab data directly from extensions database tables, and formatting links exactly as each extension indeed does by itself.

To do this a database SQL query is generated by an SQL Query Compiler that relates on settings managed by a user friendly interface. Next it's shown a full step process to create a new user defined data source for component Zoo items.

STEP 1 - analyze raw links for target extension

So the first thing to do as a starting point is analyze the raw links that target extension uses for items. We suppose to create a new data source for Zoo items in this example. We can go to Joomla! global configuration and deactivate search engines friendly urls and url rewriting parameters. After that we will be able to get raw links inside Zoo component for items it manages, and they will be in this form:

http://yourdomain.com/index.php?option=com_zoo&view=item&item_id=1&task=item&lang=en

As you see splitting by '&' character the informations needed to generate links are:

- **option** - the component name
- **view** - the component view name to show this type of items
- **item_id** - the id for every items, almost every extension need it
- **task** - an extra parameter that inform component about the task that should be executed

Within all these data the only **dynamic element** selected from database is the item ID that changes for every links.

With SQL Query Compiler you can select from 1 **main database table** that relates to specific items, and **join with max 3 other tables** to get additional information such as category to which items belong. With this in mind we can specify the static parameters for generated links query string as shown in the image below.

Parameters for generated links query string ⓘ

Specify component VIEW if needed for link:

item

Enter additional params for query string

task=item

Menu item for alias SEF links

No menu item

bottommenu

- Zoo frontpage

JomSocial toolbar

- Profile

- Change Profile Picture

- Change Profile Video

- Edit Profile

- Edit Details

- Privacy

- Preferences

- Customize My Page

- Friends

- Show All

- Search

SPECIFY VIEW AND TASK FOR COMPONENT THROUGH SPECIFIC FIELDS

STEP 2 - setup main table settings

Now we can setup the first main table that contains real Zoo items with these steps:

- **choose component**
- **select field for title in sitemap** - usually 'name' or 'title' in most extensions
- **id** - the real item id that in this case need to be renamed as 'item_id' according to link format
- **ordering** - optionally you can specify ordering for retrieved items inside sitemap
- **where condition** - optionally you can specify where condition as a filters for retrieved items

Note that for some extensions that contain '**alias**' **field** in database table it could be required **activate 'Use alias field'** option, in order to get for example '**1:alias-for-item**' instead of only the '**1**' numeric ids.

Data source SQL Query Compiler™ ⓘ

Main database table

Name of component:

zoo

Select from this table:

zoo_item

Select this field as TITLE used for link text:

name

Select this field as ID needed for link:

id

AS

item_id

Use 'alias' field

No

Yes

Select this field as CATEGORY ID if needed for link:

Select field...

AS

Use 'alias' field

No

Yes

Enter additional fields if needed for link:

Where condition #1

Select field...

=

Where condition #2

Select field...

=

Where condition #3

Select field...

=

Order by

name

↑↓

Ascending

Group by

Select field...

At this point links will be **already get generated for Zoo items** as we can see in picture below, but they are shown as a **flat list and without category separation**.



You are here: [Home](#) » JSitemap

Copyright

Enter your data and copyright here
(fastsocialshare)

topmenu

Separatores

» topmenu2

» Alias

» Subcat alias

» Test single article

» external url link

» test sublikurl article

JSitemap

» Zoo items

» Item 1-cat1

» Item 2-cat1

» Item 3-cat2

» Item nocat

» Item4-cat2 1

» Virtuemart products

» Virtuemart products

» Sobipro entries

» Sobipro categories

» Joomla contacts

STEP 3 - setup first JOIN table

In order to get category information for Zoo items it's required a **JOIN query between tables** in this case a **many to many relationship** between items and categories. To accomplish this task we move on next section about '**Join table #1**' where we can choose first table to join with in many to many relationship. Of course for **other extensions** it could be enough use only **Main Table and the #1 Join Table**, because the **relationship could be of type one to many**. Zoo uses a many to many relationship and a table called '**zoo_category_item**' for this, mapping categories to items. So we can select the 2 tables and corresponding fields to generate the JOIN as in picture below.

Join table #1

Select JOIN tables	zoo_item	JOIN	zoo_category_item
Select ON fields	id	=	item_id
Select this field	Select field...	AS	Use as category title No Yes
Enter additional fields if needed for link:			
Where condition #1	Select field...	=	
Where condition #2	Select field...	=	
Where condition #3	Select field...	=	
Order by	Select field...		Select field...
Group by	Select field...		

SELECT FIRST TABLE ZOO_ITEM ON ID FIELD FOR THE JOIN

SELECT SECOND TABLE ZOO_CATEGORY_ITEM ON ITEM_ID FIELD TO COMPLETE JOIN

IN THIS CASE THERE ARE NO NEED TO SELECT EXTRA FIELDS FROM THIS TABLE OR CHOOSE WHERE FILTERS

STEP 4 - setup second JOIN table

The last step is **complete JOIN with last table** that relates to categories, to get the needed informations. Zoo uses a table called '**zoo_category**' for this, and we will join the last used mapping table 'zoo_category_item' with 'zoo_category', selecting required information to **divide items by category**.

As it's easy to understand the main information to retrieve is **category title**, but it's important to notice that here has been **switched on 'Yes'** the flag to instruct JSitemap that the selected field in this table will be **used to divide items into category for HTML sitemap**.

Next picture will show this in more details.

Join table #2

Select JOIN tables: **zoo_category_item** JOIN **zoo_category**

Select ON fields: **category_id** = **id**

Select this field: **name** AS **catname** ☒ Use as category title ☐ No ☒ Yes

Enter additional fields if needed for link:

Where condition #1: Select field... =

Where condition #2: Select field... =

Where condition #3: Select field... =

Order by: **name** ☒ Asc ☐ Desc Select field...

Group by: Select field...

Annotations:

- SELECT FIRST TABLE ZOO_CATEGORY_ITEM ON CATEGORY_ID FIELD
- SELECT SECOND TABLE ZOO_CATEGORY ON ID FIELD TO COMPLETE JOIN
- ENABLE FLAG TO INSTRUCT JSITEMAP TO USE THIS FIELD TO CATEGORIZE ITEMS
- THIS TIME WE NEED TO SELECT AN EXTRA FIELD TO RETRIEVE CATEGORY NAME AND ASSIGN 'CATNAME' TO DIFFERENTIATE FROM NAME USED BY ITEMS
- FINALLY CHOOSE AN ORDER BY FIELD TO GET CATEGORIES LISTED AND ORDERED BY NAME

STEP 5 - generate raw SQL query

At this point you can **generate the SQL query clicking on 'Apply' button** for this data source, and immediately you will see the section 'Auto generated SQL query' that contains the auto generated raw SQL query that will be responsible for data retrieving. If you are quite expert about SQL you can also **edit this query by hand**, and whenever you need the original auto generated query based on settings you can simply click on **'Regenerate SQL query'** button. This will **reset all your changes** eventually if you have made some mistakes, so you can feel free to experiment editing directly raw query.

Auto generated SQL query

THIS IS GENERATED RAW QUERY FROM SETTINGS ABOVE. YOU CAN EDIT THIS OR RESET CLICKING RED BUTTON

Auto-generated SQL raw query

```
SELECT
  '#_zoo_item'.name,
  '#_zoo_item'.id AS 'item_id',
  '#_zoo_category'.name AS 'catname'
FROM '#_zoo_item'
JOIN '#_zoo_category_item' ON '#_zoo_item'.id = '#_zoo_category_item'.item_id
JOIN '#_zoo_category' ON '#_zoo_category_item'.category_id = '#_zoo_category'.id
WHERE
  '#_zoo_item'.state = '1'
AND '#_zoo_item'.access IN (aid)
ORDER BY
  '#_zoo_category'.name,
  '#_zoo_item'.name ASC
```

[Regenerate SQL query](#)

Finally we can see the result of this setup in frontend sitemap, that **shows up with categorization for selected elements**.

Matuna Fruits
Open Source Content Management

Font size [Bigger](#) [Reset](#) [Smaller](#)



You are here: [Home](#) » JSitemap

Copyright

Enter your data and copyright here
(fastsocialshare)

topmenu

Separadores

▀ topmenu2

▀ Alias

▀ Subcat alias

▀ Test single article

▀ external url link

▀ test sublikurl article

Menu EN

JSitemap

📁 Zoo items

📁 Category 1

Item 1-cat1

Item 2-cat1

📁 Category 2

Item 3-cat2

📁 Category 2.1

Item 1-cat1

Item4-cat2.1

📁 Virtuemart products

📁 Virtuemart products

📁 Sobipro entries

📁 Sobipro categories

📁 Joomla contacts

ELEMENTS BY ZOO ARE NOW SPLITTED BY CATEGORY FOR A MORE USER FRIENDLY INTERFACE

STEP 6 - remember to choose a menu item for SEF alias string replacement if needed

Not all extensions can be automatically integrated for menu alias Joomla! routing, so you may be needed to choose by dropdown the menu item you want associate to data sources.

Just to recap if your Zoo links are in the form of:

'http://yourdomain.com/en/**component/com_zoo**/....'

you will be able to get links more SEF friendly

'http://yourdomain.com/en/**zooalias**/...'

simply selecting the menu items that relates to your Zoo component main view.

Note that if on your site you will have installed a 3PD advanced extension to manage URL rewriting such as sh404Sef you don't need this setting.

Also if you have multiple menu items for Zoo component you may need advanced URL rewriting by 3PD extensions or split every menu item on different data source filtering for example by category. More info on filtering in 'Extras' section.

Parameters for generated links query string ⓘ

Specify component VIEW if needed for link:

Enter additional params for query string:

Menu item for alias SEF links

- No menu item
- bottommenu
- Zoo frontpage**
- JomSocial toolbar
 - Profile
 - Change Profile Picture
 - Change Profile Video
 - Edit Profile
 - Edit Details
 - Privacy
 - Preferences
 - Customize My Page
- Friends
- Show All
- Search

SELECT MAIN VIEW USED FOR ZOO TO REPLACE COMPONENT/COM_ZOO WITH SEF MENU ALIAS

Ping-o-matic web service integration

JSitemap PRO for the very first time among Joomla! community offers functionalities to realize an **Inversion of Control principle for indexing your site.**

Now are you that go to search engines to shout: "EHY! I've updated my site, here is the link!"

While till now you had to **wait that a search engine come to crawl your site in a passive mode**, now you can **reverse this route** and being **you that go to search engine** sending information about your contents.

You can do this with **sitemap submit functionality** available in SEO control panel, but this can be accomplished also in a more powerful way thanks to the integration of Pingomatic web service.

Ping-O-Matic is a web service to update different search engines that your contents has changed and need to be indexed.

If you don't know about Pingomatic it's a service which **alerts (pings) multiple RSS aggregators/search engines in one action when your content has changed.** This **saves you from having to wait that every search engines discover by itself your new contents**, and also if you register your site and sitemap on a lot of search engines you should resubmit sitemaps for everyone at every change.

Pingomatic offers a **list of services** that you can ping with a single operation, specifically advocated for blog like contents.

For this you should **choose right site links to ping**, for example Joomla! contents, shop products, forum posts, blog posts, comments and so on.

It's particular useful with this type of **contents that change frequently** and can be shown also in blog like search results. This is an invaluable tool in the hand of SEO administrators to **gain more visits for your site.**

Pingomatic services are used by search engines directly as a **source of contents**, so pingung your site links you can communicate data to be shown in search results. This means **having control on what search engines index on your site.**

HEADS UP! You may tempted to **ping every contents** on your site, but really it could generate an unnecessary traffic. You should select and filter **relevant types of contents** on your site to be pinged and do it **accordingly to proper services**, so for example don't ping an 'About us' link or a 'Contact us' link on your site that will be **almost static.**

As an **example** you should ping services such as 'Feed burner' and 'Superfeedr' if your links have an RSS version format to be aggregated as feeds, you should ping 'News is free' service if your contents relate to news, you should ping 'Topic exchange' if your links belong to a forum extension like 'Kunena' and so on.

If you don't know about Ping-o-matic affiliated services you can learn more about them **clicking on labels inside edit mode** (see below for more details).

Some services such as Weblogs offer also a **real time list** of all pages and links that have been submitted, just to have an idea of what's are going on the web. This is a controller system for search engines indexing.

Using Pingomatic functionality inside JSitemap PRO is really straightforward, you will get a **list to manage all the links you have chosen to ping** on your site with details about links and time for last ping sent. It's not the case to **ping the same link twice at short intervals**, you should wait at least some minutes before re-ping the same link if your contents updates very quickly. See image below for list of pinged links.

Administration

Site Users Menus Content Components Extensions Help

1 Visitor 1 Admin 0 View Site Log out

JSitemap PRO - Ping-O-Matic Links

Filter: [] Go Reset

From date: [] To date: [] Go Reset

Open Ping-o-matic stats

LIST OF PINGED LINKS WITH LAST PING TIME AND FILTERS TO MAKE QUICK SEARCH

MANAGE TASKS AND PINGOMATIC GRAPH STATS FOR LINKS PINGED BY MONTH

Num	Title	URL	Rss URL	Last ping time	ID
1	Hand Shovel	http://joomla25/en/virtuemart-category/hand-shovel-detail.html		2013-10-04 14:53:43	4
2	Autos	http://joomla25/en/component/sobipro/?sid=36:autos	http://joomla25/en/component/sobipro/?sid=36:autos&format=rss	2013-09-24 23:06:42	2
3	Item 1-cat1	http://joomla25/en/component/zoo/item/item-1.html		2013-09-23 23:10:39	1

Display # 20

To ping links you have to **enter inside edit mode** where you will be able to see the whole **list of services available for ping**. All you have to do is **specify link informations, activate services** that relate to contents link semantic and **click on 'Send pings'** button inside toolbar. The last ping time will be automatically updated and if you are working on a new record it will be automatically saved. To be also more easy you can **pick URLs for your site directly from sitemap links**, clicking on **'Pick a URL from sitemap'** and choosing needed link.

Administration

Site Users Menus Content Components Extensions Help

1 Visitor 1 Admin 0 View Site Log out

Edit Ping-O-Matic Link

Send pings Save Save & Close Cancel

Pingomatic link details

Specify link informations title and URLs. RSS is optional

START PINGING PROCESS FOR CURRENT SELECTED LINK

Pick a URL from sitemap

CLICK TO GRAB LINKS DIRECTLY FROM SITEMAP

Enable services to ping

Common services list

No	Yes	Service
<input type="checkbox"/>	<input type="checkbox"/>	Google Blog Search
<input type="checkbox"/>	<input type="checkbox"/>	Weblogs.com
<input type="checkbox"/>	<input type="checkbox"/>	Bloggs
<input type="checkbox"/>	<input type="checkbox"/>	Feed Burner
<input type="checkbox"/>	<input type="checkbox"/>	NewsCator
<input type="checkbox"/>	<input type="checkbox"/>	My Yahoo!
<input type="checkbox"/>	<input type="checkbox"/>	Pub Sub.com
<input type="checkbox"/>	<input type="checkbox"/>	Blogdigger
<input type="checkbox"/>	<input type="checkbox"/>	Weblogatol
<input type="checkbox"/>	<input type="checkbox"/>	News Is Free

Specialized services list

No	Yes	Service
<input type="checkbox"/>	<input type="checkbox"/>	Audio Weblogs
<input type="checkbox"/>	<input type="checkbox"/>	Hubbub
<input type="checkbox"/>	<input type="checkbox"/>	A2B Geolocation
<input type="checkbox"/>	<input type="checkbox"/>	Blog Shares

ACTIVATE SERVICES TO PING FOR CURRENT LINK

Activate from services list:

Multiple sitemaps

JSitemap PRO supports creation of multiple sitemaps that can contain **different sets of data sources**.

You can create multiple sitemaps using **Joomla! menu items** and specifying the set of data sources that you need for that particular sitemap view. For example you can have Sitemap1 that includes **data sources x-y-z** and Sitemap2 that includes **data sources a-b-c**.

Create a new HTML sitemap view

Select a new menu item for JSitemap HTML sitemap and you will be able to see on the right the **multiselect dropdown to choose the data sources to include in this sitemap**. In this way the 'Sitemap1' will contain only elements from data sources: content, main menu, top menu, Joomla! contacts component and K2 elements.

Administration Joomla!

Site Users Menus Content Components Extensions Help Multilanguage Status 0 Visitors 1 Admin 0 View Site Log out

Menu Manager: New Menu Item

Save Cancel Help

Details

Menu Item Type * Standard HTML Sitemap Layout Select

Menu Title * Sitemap 1

Alias

Note

Link index.php?option=com_jmap&view=sitemap

Status Published

Access Public

Menu Location * Main menu

Parent Item Menu Item Root

Ordering Ordering will be available after saving

Target Window Parent

Default Page No Yes

Language All

Template Style - Use Default -

ID 0

Filter by data source

DATA SOURCE SET OF DATA SOURCE YOU NEED TO INCLUDE IN THIS SITMAP

NO FILTER

CONTENT

Content

MENU

Main menu

topmenu

bottommenu

Kunena Menu

USER

Joomla contacts

Easydiscuss categories

Joomla weblinks

K2 items

Zoo items

ASPECT OPTIONS

Link Type Options

Page Display Options

Metadata Options

Menu Item Associations

Module Assignment for this Menu Item

OVERWRITE SITEMAP ASPECT OPTIONS

Assign same view filters to other sitemap formats

Creating multiple sitemaps linked to menu, works and is most useful **normally for HTML sitemaps** when accessed by users on frontend site through menu items. In some more advanced cases however, especially if you have multilanguage site that requires different sitemaps per each language also for XML formats needed for search engines, you may need to **apply the same set of data sources filters** also to other sitemap formats supported by JSitemap, so having multiple sitemaps also for XML formats used by search engines.

To associate all the sitemap formats to a menu filter, simply **select from dropdown the menu item** where you specified a set of data sources for a certain sitemap, and the **links to generate all the sitemap formats will be updated automatically** and will be ready to be submitted to search engines.

Administration Joomla!

Site Users Menus Content Components Extensions Help 0 Visitors 1 Admin 0 View Site Log out

JSitemap PRO - Control Panel

Control Panel

Sitemap Data Sources

Wizard Data Sources

Show HTML Sitemap

Show raw XML Sitemaps

Show formatted XML/XSL Sitemaps

Export XML Sitemap

Robots.txt Editor

Help & Documentation

Up-to-date. Latest release: 2.0.2

JSitemap PRO SEO panel

Link for HTML sitemap http://joomla25/index.php?option=com_jmap&view=sitemap&lang=en&Itemid=727

Link for XML sitemap http://joomla25/index.php?option=com_jmap&view=sitemap&format=xml&lang=en&Itemid=727

Link for XML Images sitemap http://joomla25/index.php?option=com_jmap&view=sitemap&format=images&lang=en&Itemid=727

Link for XML Google News sitemap http://joomla25/index.php?option=com_jmap&view=sitemap&format=gnews&lang=en&Itemid=727

Link for XML Mobile sitemap http://joomla25/index.php?option=com_jmap&view=sitemap&format=mobile&lang=en&Itemid=727

Sitemap language English (UK)

Apply menu filters Sitemap only for K2 and contents

Number of published data sources: 10 Number of total available data sources: 42 Number of total menu data sources: 8 Number of user defined data sources: 33

LINKS WILL BE REFRESHED WITH ADDITIONAL PARAMETER TO APPLY FILTERS

LINKS WILL BE REFRESHED WITH ADDITIONAL PARAMETER TO APPLY FILTERS

CHOOSE MENU ITEM TO APPLY DATA SOURCES FILTERS TO ALL SITEMAP FORMATS

When this feature is useful or required

Suppose for example to have a multilanguage site using native Joomla multilanguage with different menus for English and German. In this case using some 3PD extensions types of data source you may need to **generate different sitemaps per each language** and linking sitemaps from corresponding language menu item.

With this feature you can assign SitemapEN to menu item showed in English version of your site and associate a set of data sources for english, then you can assign SitemapDE to menu item showed in German version of your site and associate another set of data sources used for german language.

HEADS UP! This procedure is **mandatory** when you are using 3PD extensions that need **multiple data sources mapped to multiple categories linked by different menu items** and all is multilanguage. In this case you need to associate every data source to single menu item using the dropdown 'Menu item for alias SEF links', and because you are using multilanguage you need different sitemaps for each language optionally filtered by data sources mapped to menu items available in that language.

Stats and charts

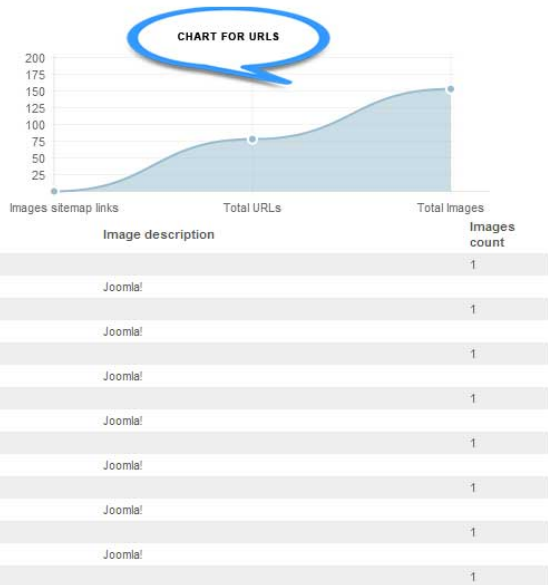
Using control panel button to open **formatted sitemaps layout** you can generate and display a user friendly sitmaps view, showing ordering columns for urls, numeric stats for URLs included in sitemap and visualization charts.

In this way you can easily control the contents inside every single sitemap and the number of indexed links. If you choose to view the raw XML sitemaps from control panel button, you will get the raw XML as is submitted to search engines.

In picture below you can see an example of formatted sitemap for images, specifying number of links and number of images scanned and included in sitemap.

XML Images Sitemap

Generated by JSitemap Pro
You can find more information about JSitemap Pro at [JSitemap Pro](#)
This sitemap contains **78 URLs**
This sitemap contains **153 Images**



Extras

This section contains explanations for some extra activities and options that can be done with JSitemap PRO.

Using multicolumns responsive sitemap

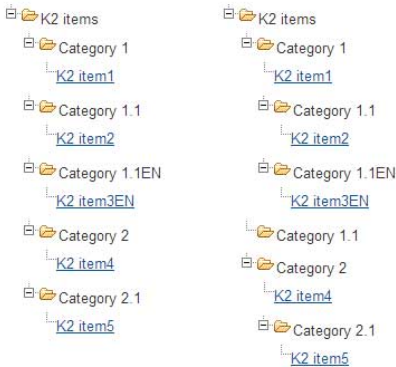
JSitemap PRO supports generation of **multicolumns HTML sitemap**, where you can have a default max number of 3 columns side by side. This is particularly useful when you have many elements and data sources in your sitemap and you want your user have a better visualization that doesn't require a very long single column.

To **activate the multicolumns layout** you can simply enable the available setting inside JSitemap configuration, under 'Sitemap Aspect' tab. The multicolumns layout **support responsiveness and mobile devices**, this means that under certain screen resolution the side by side columns will be **stacked to show as a single column** to optimize visualization on mobile devices.

You need to have at least 3 data sources to have 3 different columns.

Multilevel tree of folders

For 3PD extensions you can choose to let JSitemap **calculate a multilevel tree of nested folders** when HTML sitemap is rendered for component items. This feature requires that 3PD extensions is supported by wizard and is compatible to let JSitemap have enough informations to generate such a nested tree, so you may have some 3PD extensions not affected when this option is turned on. When multilevel tree of folders option is enabled and supported from 3PD extension as for K2 you will see a **full nested and indented tree of folders** with unlimited depth. Picture below show comparison for same data source in sitemap generated by K2 items, having 1 single level on the left side and multilevel on the right side.



Please note that this setting affects only data source for supported extensions and can be resource expensive, so don't activate it if you have thousands of links in your sitemap. Data sources that address categories itself won't be affected by this type of rendering.

Specify sitemap priorities for every single menu item

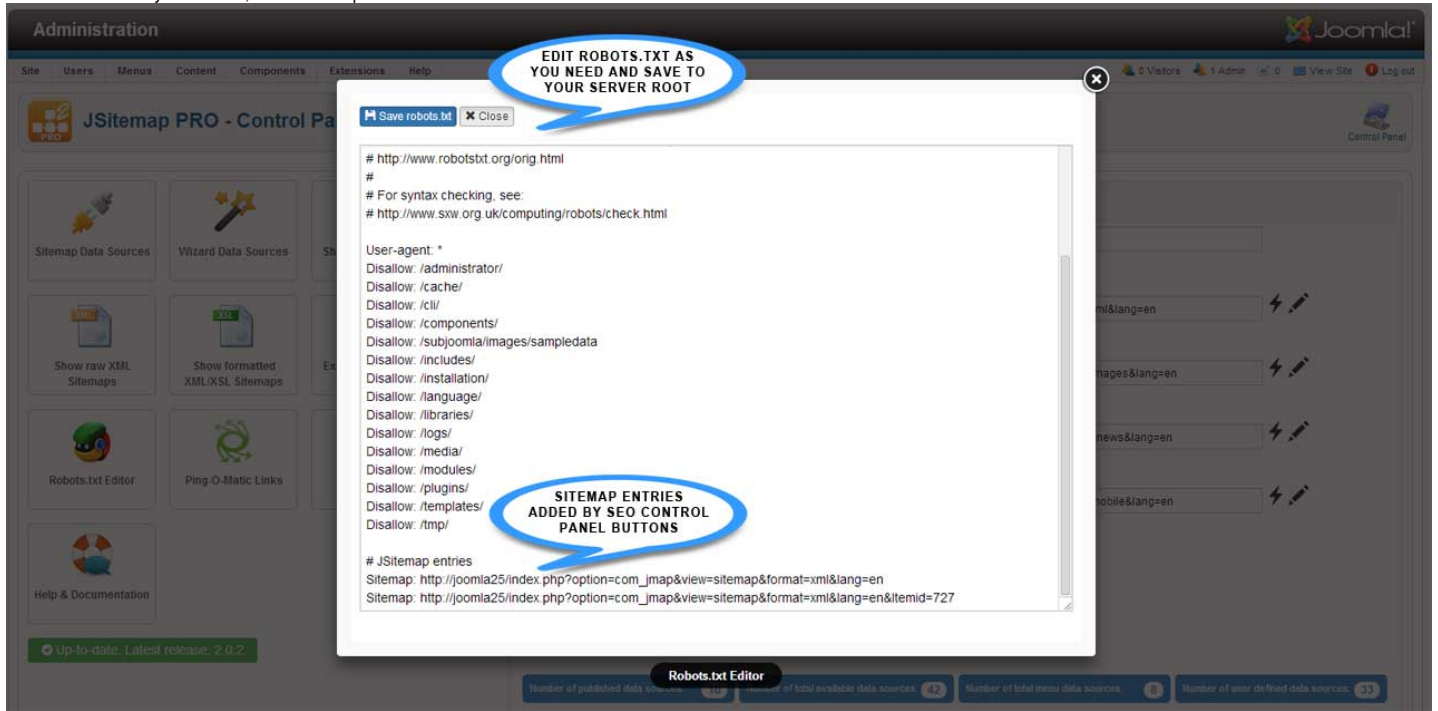
Sitemap priorities are defined normally at **data source level**, in that you can assign a different priority to a certain data source in your sitemap, being it of type menu, content or user. However for **menu type** data sources it could be needed having chance to specify a **different priority also for every single menu item**. This can be useful for example to **instruct search engines** that your menu link to products is more important than a link to company information or contacts. To setup this you will find inside every data source of type menu the related section as shown in image below. Assigning or removing priorities from menu items is straightforward, simply select menu item from left dropdown, priority on right dropdown and use assign/remove buttons.



Integrated editor for robots.txt file

JSitemap PRO integrates editor for robots.txt file that let you choose exactly what kind of exclusion and blocks you can define for spiders and bots. Moreover you can **keep track of every sitemaps entry** added clicking on SEO control panel buttons, to let search engines find your sitemaps, or even remove them.

The button to open robots.txt editor is available in main control panel, and once activate you can edit and save easily robots file, as shown in picture below.



Filtering data source items

Let's suppose you need to **filter a data source** for a certain component to show only items that belong to particular categories or you need to create multiple data sources for a component filtering each data source to show items for a single category linked to menu items available in your Joomla! site.

This can be easily accomplished using **data source 'WHERE' conditions** for the needed table and field. In the picture below is reported example to filter K2 items by multiple categories with IDs 1,2,3.

Leaving the operator to '=' will include the items with category ID matching one of the following ID, you can also change the operator for example to get items that belong to category with ID greater than a certain value.

Data source SQL Query Compiler™

Main database table

Name of component: k2

Select from this table: k2_items

Select this field as TITLE used for link text: title AS

Select this field as ID needed for link: id AS Use 'alias' field No Yes URL filter No Yes

Select this field as CATEGORY ID if needed for link: catid AS Use 'alias' field No Yes URL filter No Yes

Enter additional fields

Where condition #1: catid = 1,2,3

Where condition #2: Select field...

Where condition #3: Select field...

Order by: title Ascending

Group by: Select field...

CHOOSE CATID FIELD FOR THIS TABLE TO FILTER

FILTER K2 ITEMS BY MULTIPLE CATEGORIES ID COMMA SEPARATED

Having dummy sitemap.xml file

As by default the static sitemap.xml file located at your server root is no more necessary using JSitemap. This solution is now deprecated, because too complex to manage, having to generate a new sitemap and refresh the file manually everytime your sitemap changes. Moreover having multiple sitemaps that would be quite impossible manage a lot of physical XML files at the root of your server.

To overcome this limitations JSitemap introduces the new concept of **dynamic generated sitemaps**, that uses **direct links to component** to produce an XML sitemap **on the fly**, being it always updated. However someone could need or like to use a single XML sitemap **mapped as a classical file placed at server root**, so in this case having <http://mydomain.com/sitemap.xml>. To have this result you need to edit your .htaccess file as described below, so that also if the link appears as a physical file on your server, it will be rewritten by .htaccess and Joomla SEF to execute the dynamic link used by JSitemap to have sitemap generated on the fly instead of static XML file. For this setup, follow these steps:

STEP 1 - Create menu link to HTML sitemap

The first step is **create a common menu item that links to HTML format sitemap** on your site, assigning an **alias named 'sitemap'**, as you see in picture below.

Administration

Site Users Menus Content Components Extensions Help

Menu Manager: Edit Menu Item

Details

Menu Item Type: Standard

Menu Title: Sitemap

Alias: sitemap

Note:

Link: index.php?option=com_jmap&view=sitemap

Status: Published

Access: Public

Menu Location: Main menu

Parent Item: Menu Item Root

Ordering: Sitemap solo menu nuovo

Target Window: Parent

Default Page: No

Language: All

Template Style: - Use Default -

ID: 748

SPECIFY THE ALIAS FOR THIS MENU AS 'SITEMAP'

STEP 2 - Editing .htaccess file

Once the alias for 'sitemap' has been created in your site menu, you can **edit .htaccess** to have rewrite rule for xml files extensions in the same way already happens for html files. Open your .htaccess and locate the following line:

```
RewriteCond %{REQUEST_URI} /component/([A-Z]*\.php/html?/feed/pdf/vcf/raw))$ [NC]
now what you need to add is the 'xml' extension as a file extension, to make it look in this way:
RewriteCond %{REQUEST_URI} /component/([A-Z]*\.php/html?/xml/feed/pdf/vcf/raw))$ [NC]
```

This system could be also replicate for other sitemap formats if yo like, so for example for images sitemap you can have <http://mydomain.com/sitemap.images>, adding the 'images' extension to .htaccess:

```
RewriteCond %{REQUEST_URI} /component/([A-Z]*\.php/html?/xml/images/feed/pdf/vcf/raw))$ [NC]
```


Embed sitemap in module position

JSitemap PRO can be embedded also inside Joomla! module position in easy way and without need of additional tools, because it's integrated with Joomla! native module system.

In order to proceed to create a new module for JSitemap view you can do the following steps.

STEP 1 - locate the HTML sitemap link in SEO control panel

Your HTML sitemap link will look like this: **`http://yourdomain.com/index.php?`**

`option=com_jmap&view=sitemap&lang=en`

In order to use it for module inclusion you have to add an extra string to link '&tmpl=component', so that your final link will be in this form: **`http://yourdomain.com/index.php?`**

`option=com_jmap&view=sitemap&lang=en&tmpl=component`

STEP 2 - Create a new Joomla! module

In Joomla! module manager create a new module of type "Wrapper" choosing a title and a position are usual, based on position you want to be shown your sitemap.

In right panel for 'Basic options' paste the final link for HTML sitemap in the first field named 'URL' and save the module. Of course you can also fine tune other settings like height, auto height, frame border, etc.

STEP 3 - Set JSitemap to open link in right way

When you embed sitemap in a Joomla! module that can be shown in all or some pages of your site, you need to set links target to to your main site window, to avoid opening blank pages.

To do this you can go in JSitemap configuration, and set 'Open link mode' parameter to 'Parent window'. That's all, your module will be visible and will show sitemap contents. Please note that for module display only sitemap one column layout is available.

Override HTML sitemap layout

JSitemap PRO is also fully customizable for HTML layout, because it's based in Joomla! template files that can be overridden in our template. By default it can be rendered in several way and combination, using parameters available in 'Sitemap Aspect' tab. You can choose to show expandable tree of folder or basic sitemap tree, show as multi columns or single column, show expanded by default or keep collapsed and expand by users.

But if you need some more specific customizations you can work on CSS or make a template override. JSitemap PRO is based on this files for rendering of HTML layout:

- For CSS styles - yoursitepath/components/com_jmap/js/jquery.treeview.css
- For template override - yoursitepath/components/com_jmap/views/sitemap/tmpl/default_html.php
- For template override - yoursitepath/components/com_jmap/views/sitemap/tmpl/default_html_content.php
- For template override - yoursitepath/components/com_jmap/views/sitemap/tmpl/default_html_menu.php
- For template override - yoursitepath/components/com_jmap/views/sitemap/tmpl/default_html_user.php

You can override template files as usual in Joomla! system, placing override in 'html' folder of your current template for extension named 'com_jmap'.